

CJ Pro Labelling System User Guide

Contents

Section 1: Driver And Software

Page 2	Installing CJ Pro Software & Driver
Page 5	Setting Up For Printing On To Continuous Vinyl
Page 8	Setting Up For Printing On To Die-Cut Labels
Page 13	Quick Start Guide - Designing a Label
Page 19	Tiling Feature
Page 24	Settings Guide; Darkness and Speed
Page 24	Inversing

Section 2: Operating CJ Pro Printer

Page 23	Help Details
Page 24	Product Description
Page 25	Operating Instructions
Page 25	Setting up the Printer
Page 27	Loading the Ribbon
Page 28	Loading Supply (Continuous Vinyl or Die-Cut Labels)
Page 28	Performing the Label Sensor Calibration
Page 29	Important Safety Instructions & Other Notices
Page 30	General Printer Specifications
Page 32	Trouble Shooting
Page 32	Maintenance
Page 33	Recovery

Section 1: Driver & Software

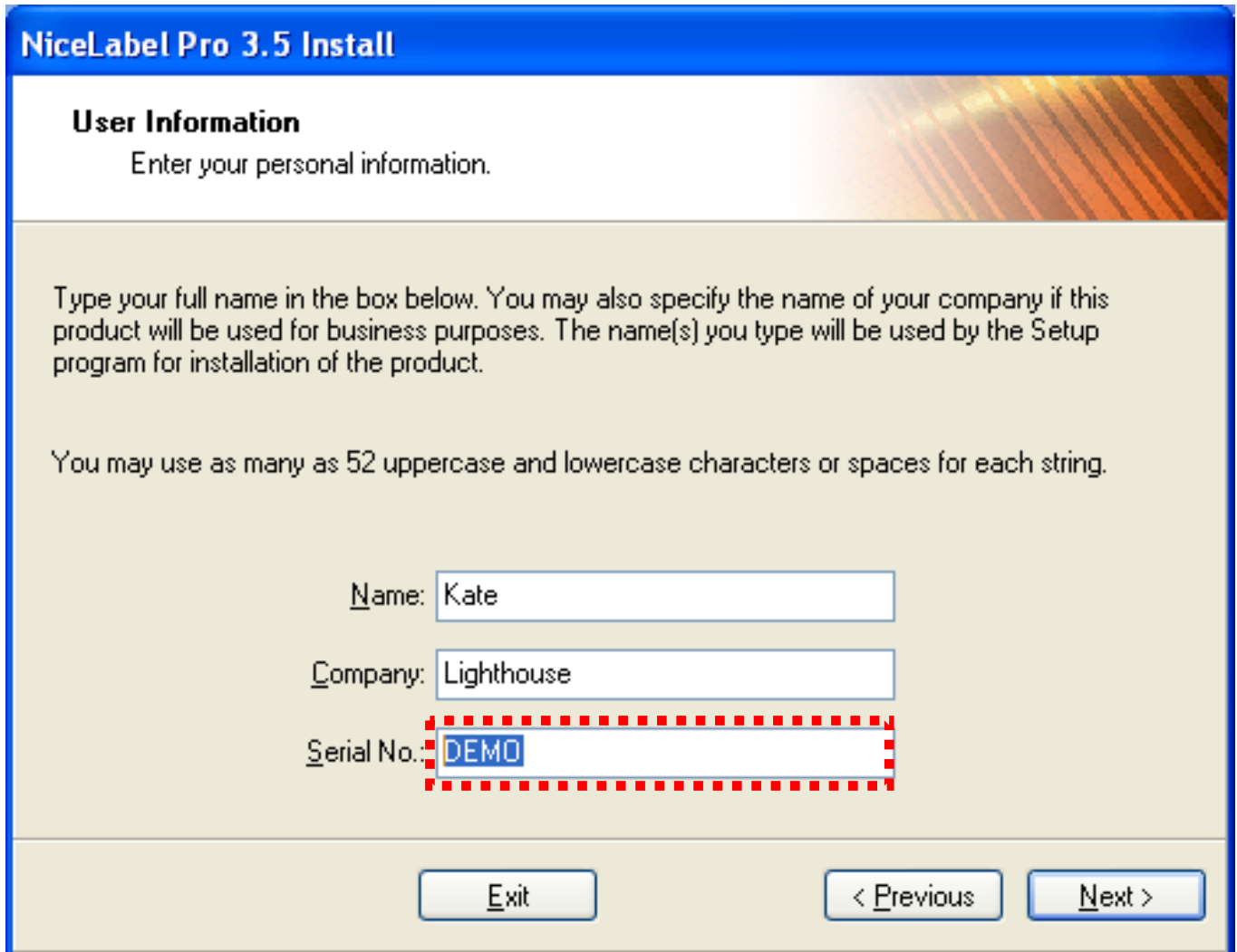
Installing CJ Pro Software & Printer Driver

1. Insert Lighthouse CD
2. Autorun will guide you through the installation of *Nicelabel Pro*



Very Important

When installing the software remember to enter the serial number of the software. This will be displayed on the CD envelope.



NiceLabel Pro 3.5 Install

User Information
Enter your personal information.

Type your full name in the box below. You may also specify the name of your company if this product will be used for business purposes. The name(s) you type will be used by the Setup program for installation of the product.

You may use as many as 52 uppercase and lowercase characters or spaces for each string.

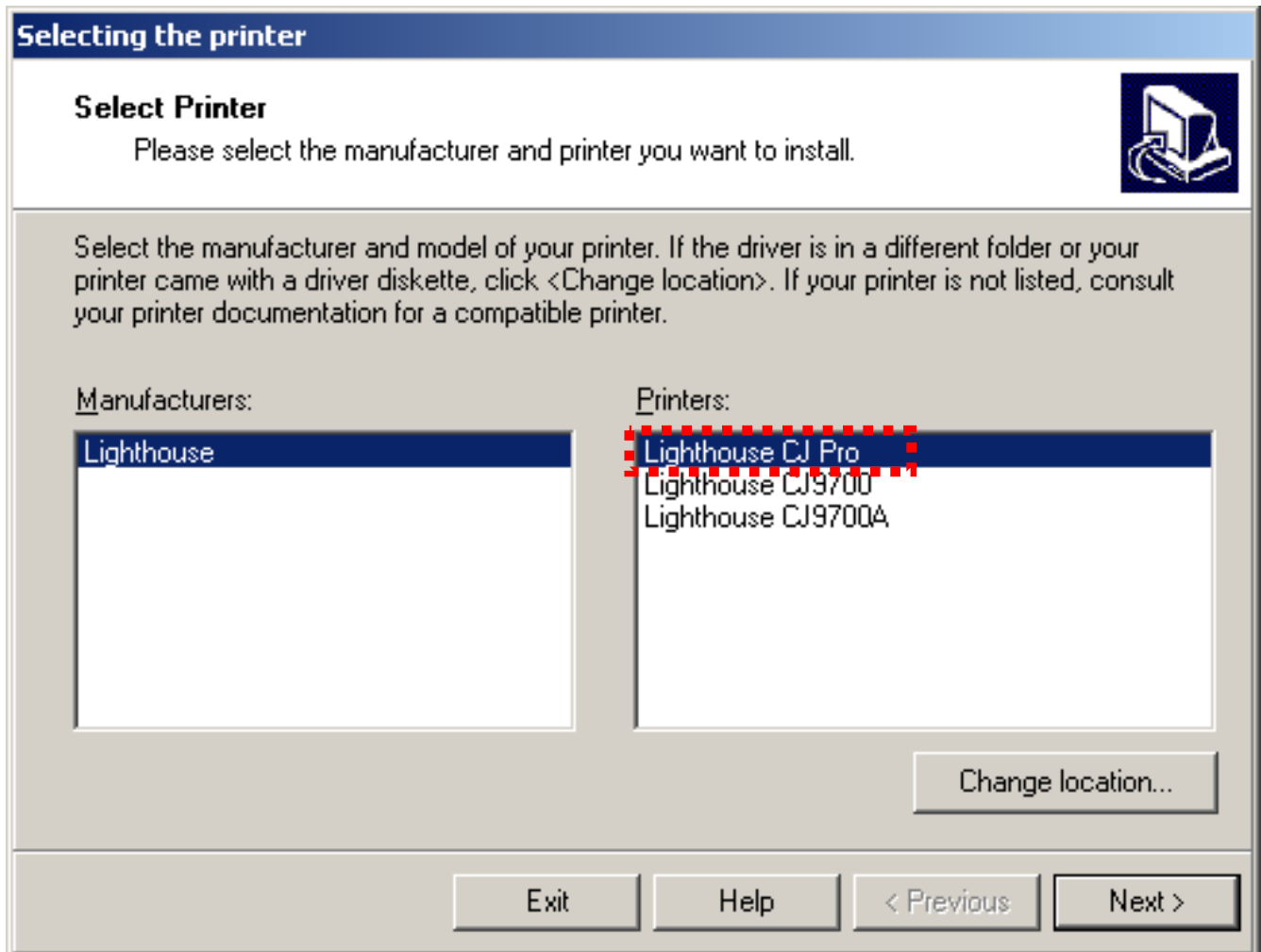
Name:

Company:

Serial No.:

Important Driver Information

When installing the printer driver you will see three options. Select the Lighthouse CJ Pro printer.

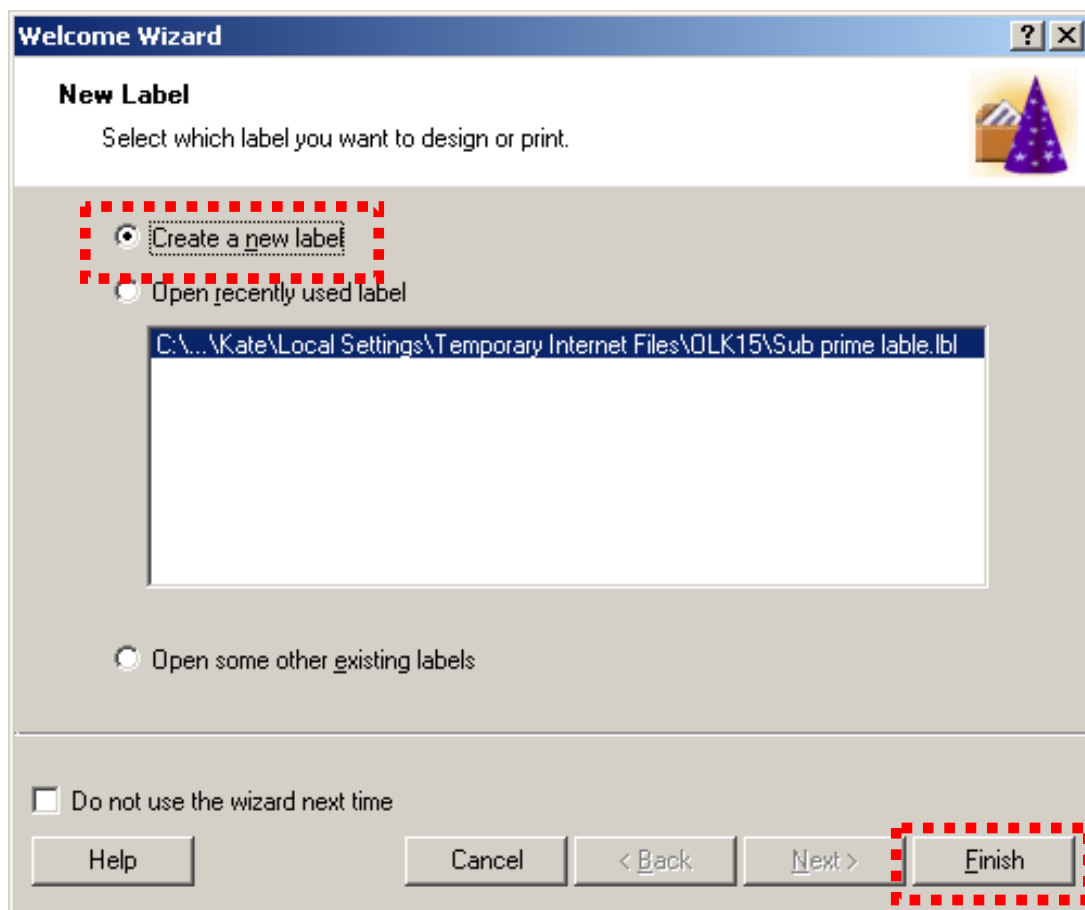


Setting Up For Printing On Continuous Vinyl

1. Double click on the special Lighthouse Version of *Nicelabel 4 Pro for Lighthouse* to launch the software.

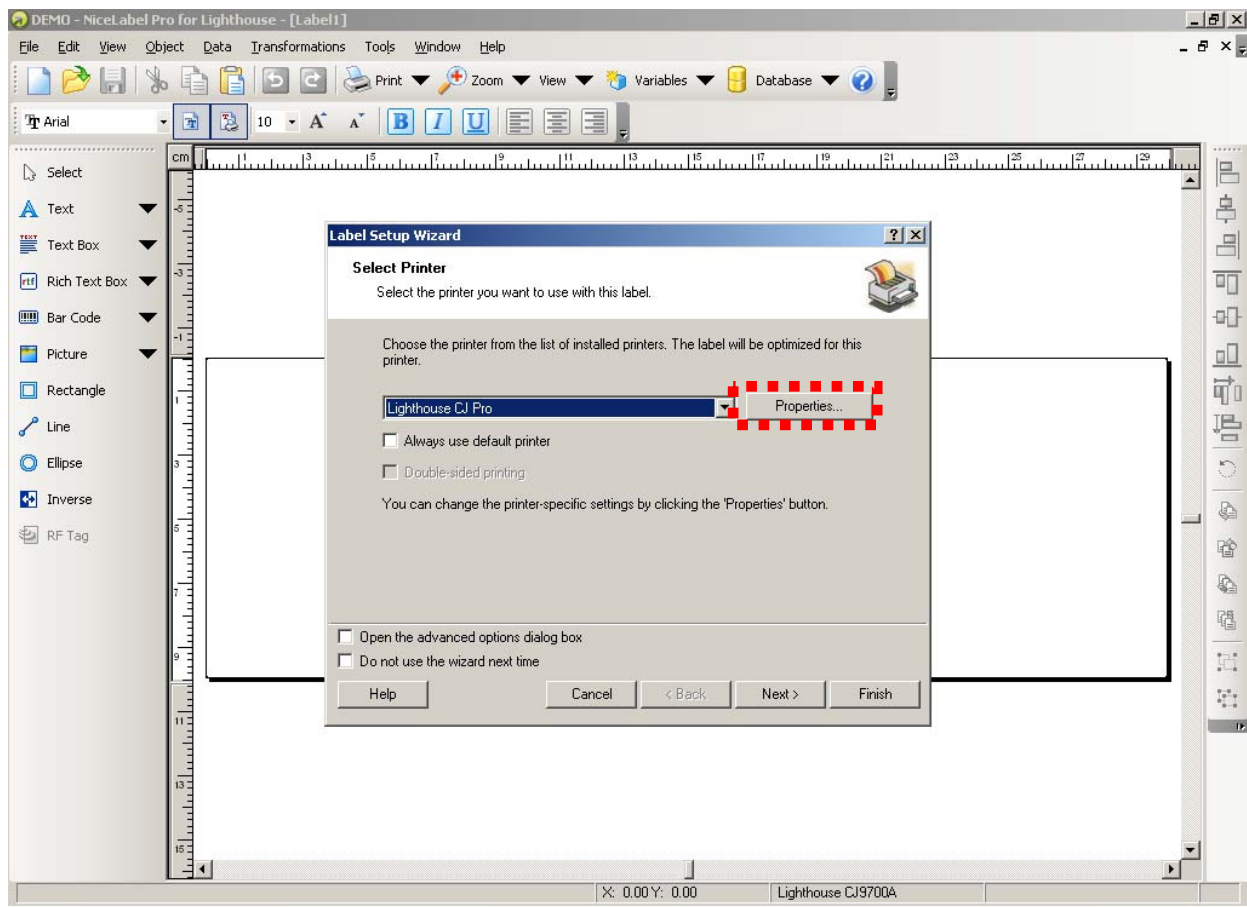


2. A welcome wizard will appear giving the option to create a new label or open an existing one. Leave *Create a new label* selected and click *Finish*.



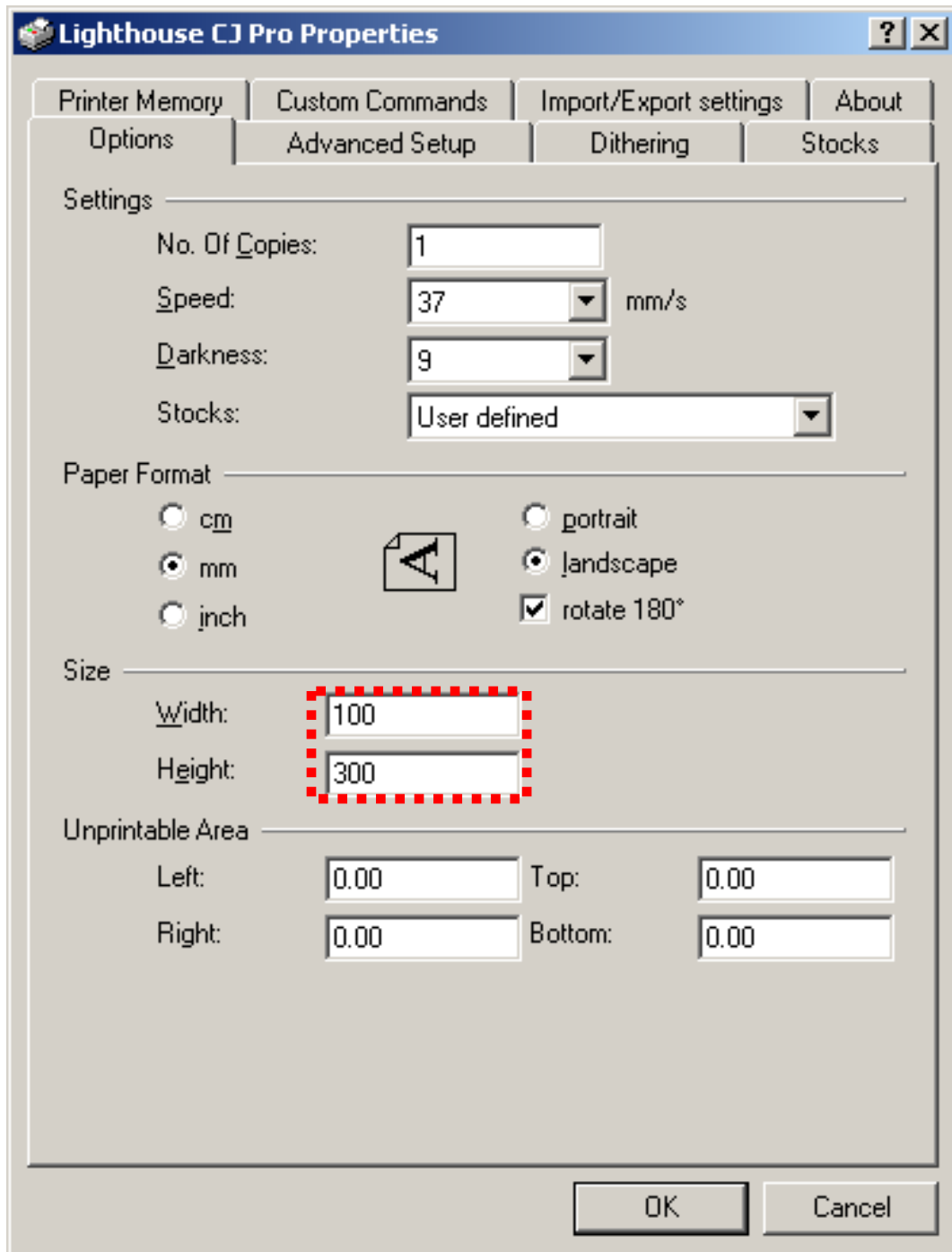
*To remove the Welcome Wizard, go to *Tools – User Interface – Settings* and un-tick *Startup Wizard**

3. A label Setup wizard will appear. Click on *Properties*

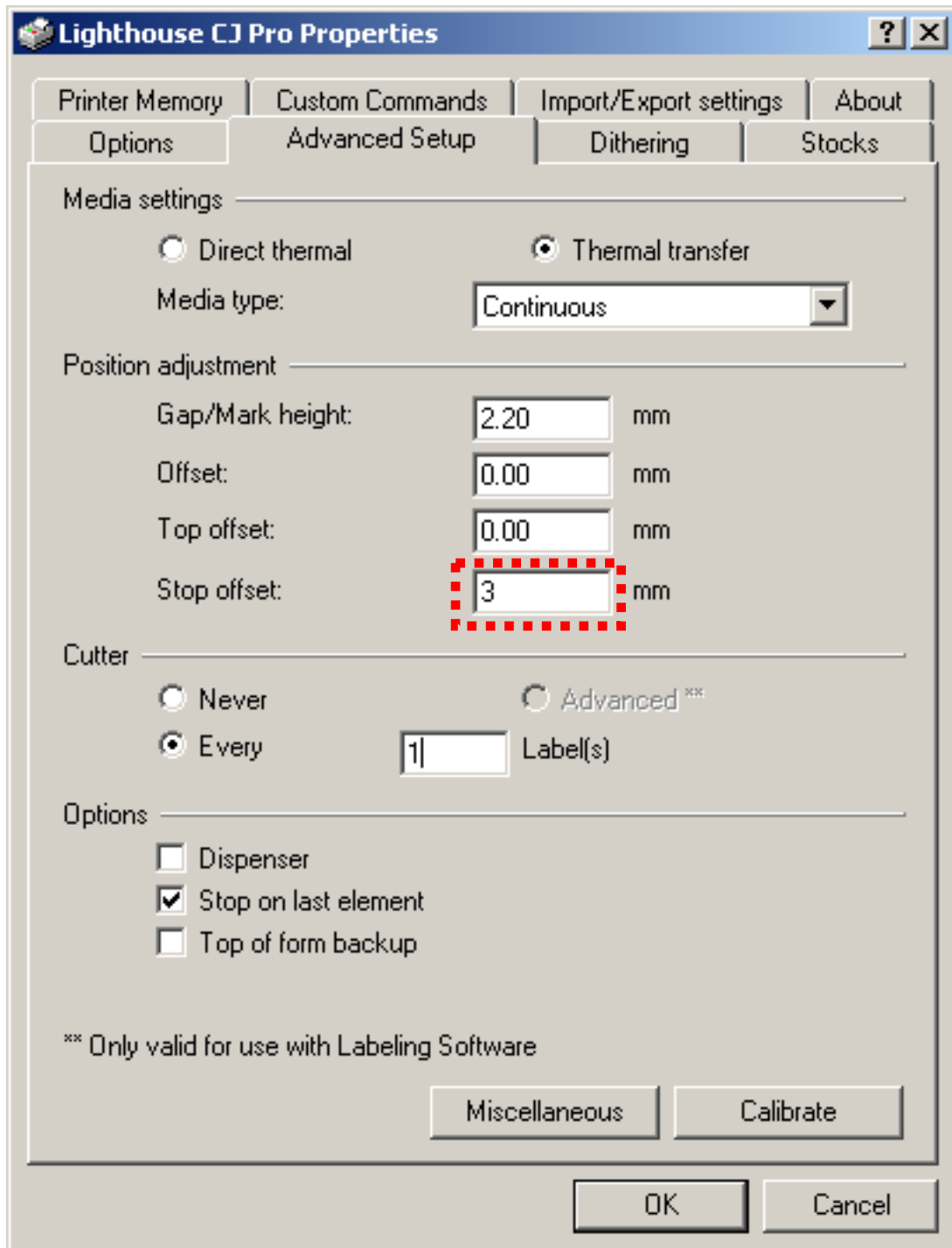


4. The default settings are for printing on continuous vinyl, with a 100mm x 300mm page (4" x 12".) This length (height) can be increased to a maximum of

1090mm/43". Bear in mind that the cutter will be activated after the last printed item on your label. If you are using our 30mm or 50mm consumables adjust the *Width* setting accordingly.



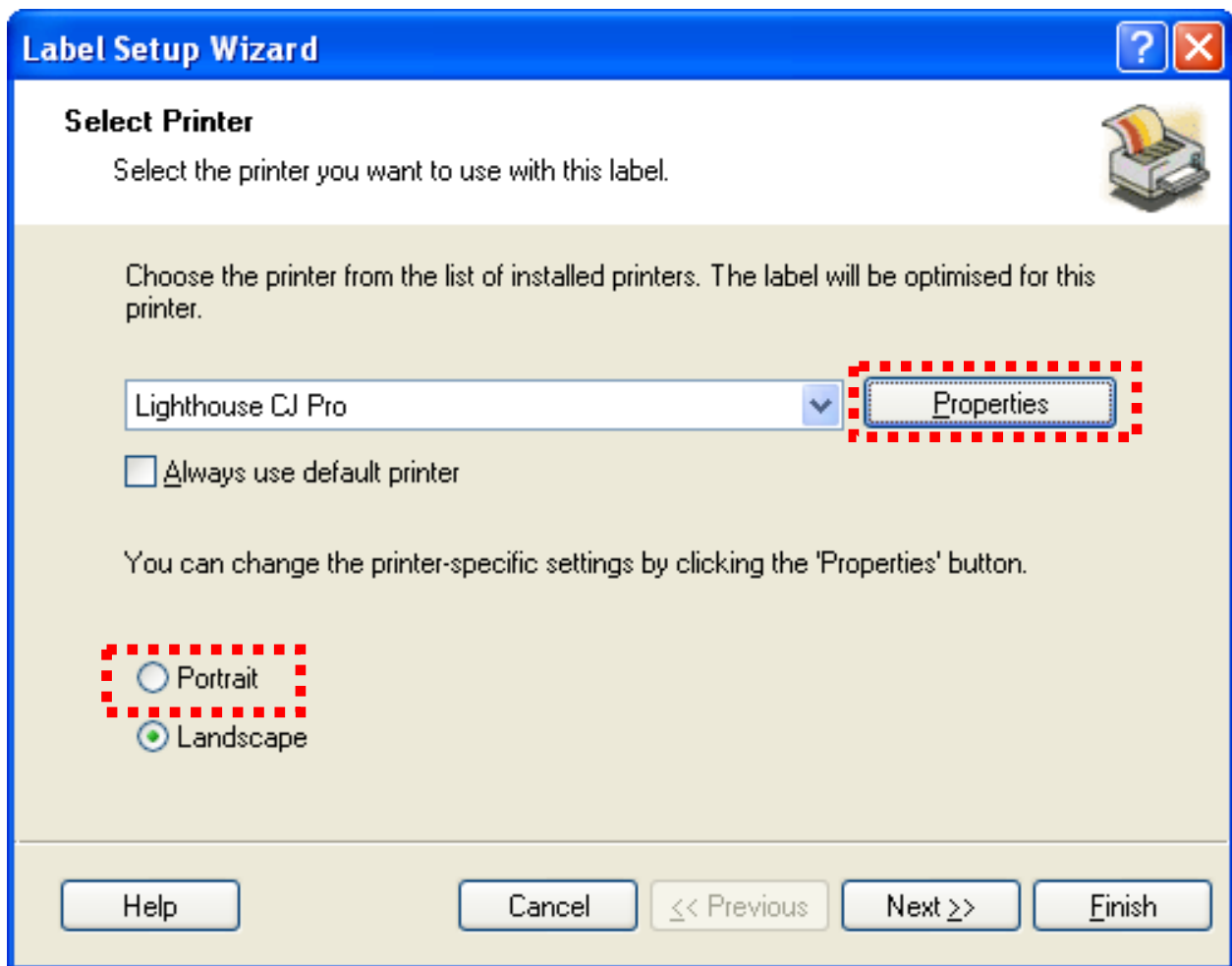
5. The other default settings do not need adjusting for printing continuous vinyl. The only option you may wish to adjust is the *Stop Offset*. This alters the margin between the last printed element on the label and where the cutter is activated. This can be adjusted up or down to suit your requirements.



6. Click *OK* then *Finish* and you are ready to design your label.

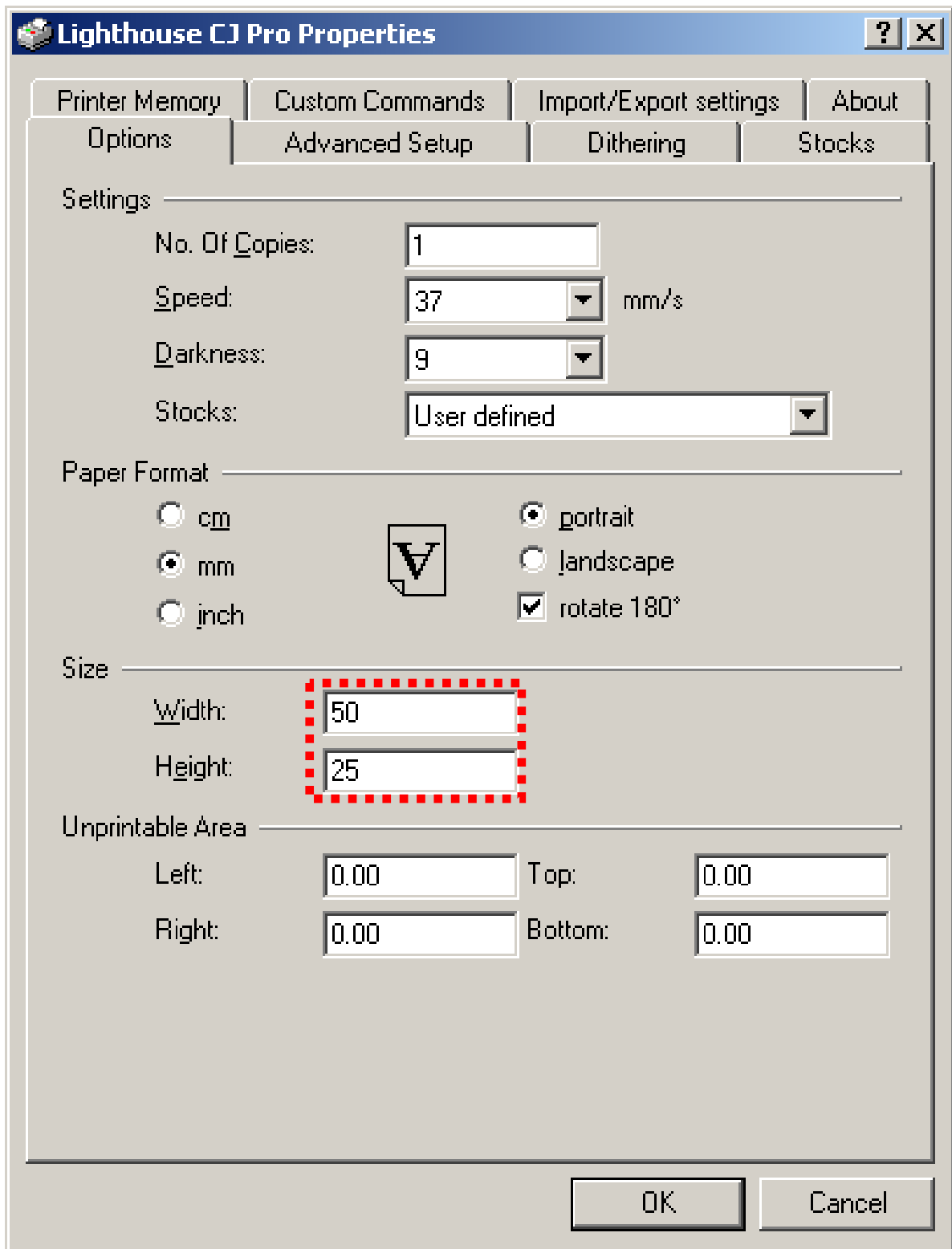
Setting Up For Printing On Die-cut Labels

1. Double click on *Nicelabel Pro* to launch software. Click *File > New Label*.

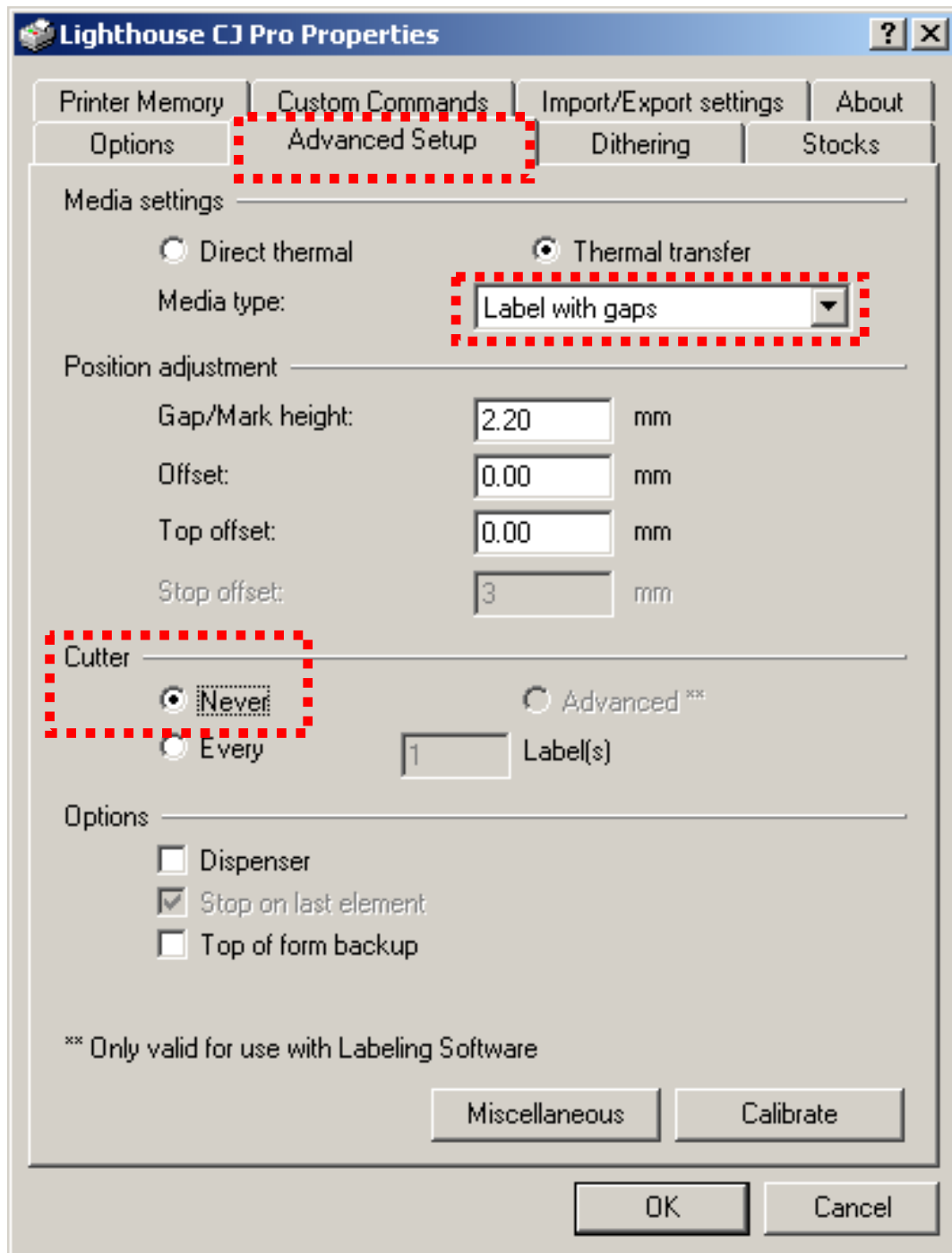


2. Change the orientation from *Landscape* to *Portrait*. Click on *Properties*

3. The default settings are for printing on continuous vinyl, so a few adjustments are required. Enter the specific *Width* of your label and *Height* of your label.



4. Next, click on the *Advanced Setup* tab



5. There are 2 parameter settings to alter on this tab:

- Change the *Media type* to *Label with gaps* if there is a gap between labels. If there are black lines between labels, select *Label with marks*
- Under the Cutter section, tick *Never*

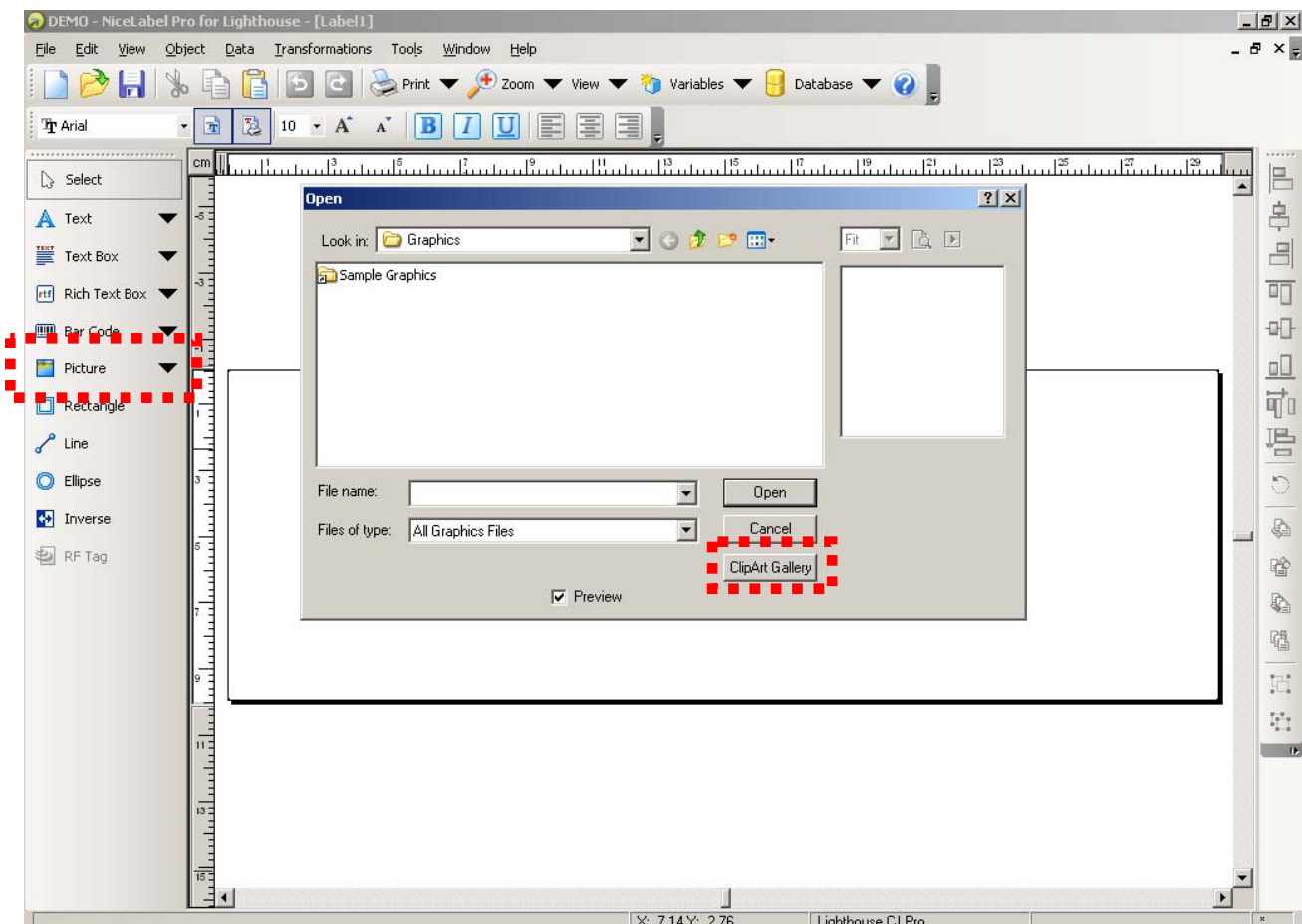
Click *OK* then *Finish* and you are ready to design your label.

Quick Start Guide - Designing a Label

This guide will take you through the basic steps of how to produce a label. For more in-depth information, consult the *Help* menu within the software or contact us at Lighthouse by phone, fax or email. Full Help details are available on Page 23.

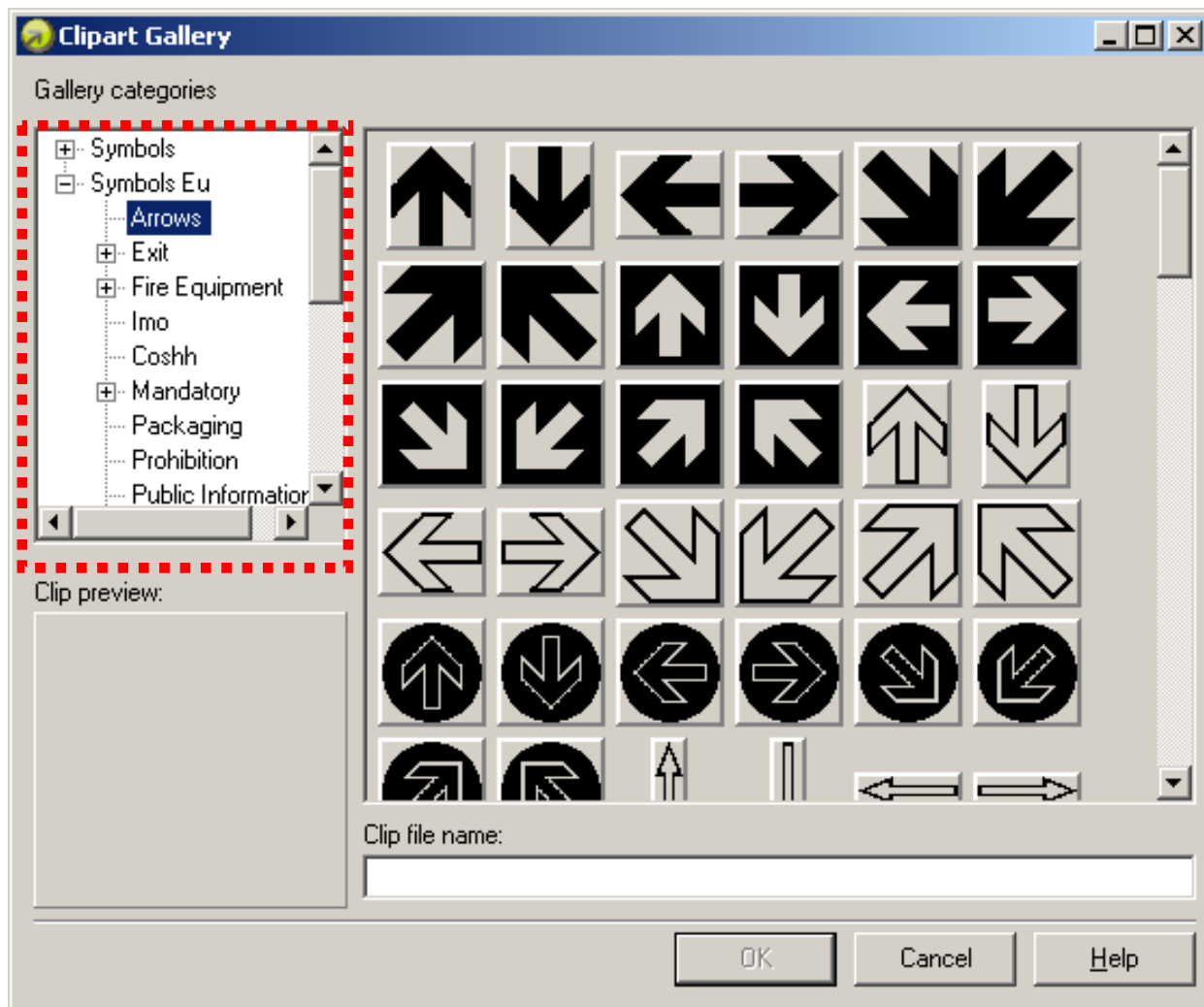
For our example, we will produce a 'Danger High Voltage' label on continuous vinyl, which incorporates text and a symbol from the built-in clipart gallery.

1. To start, follow the instructions for *Setting Up For Printing On Continuous Vinyl* on page 5.
2. Click on the *Picture* button located on the toolbar to the left of your screen.

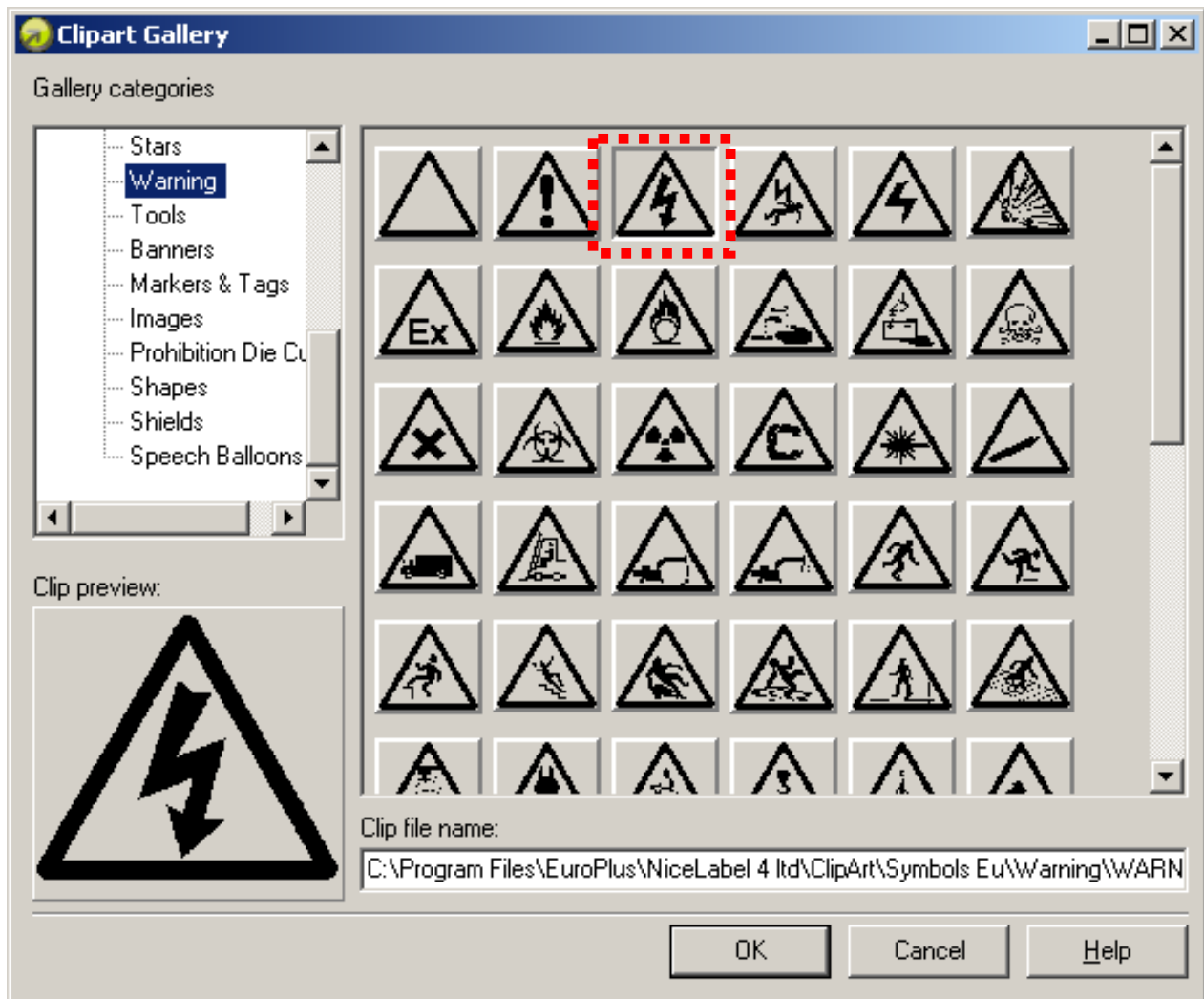


3. Click on *Open Clipart Gallery* in the bottom right hand corner.

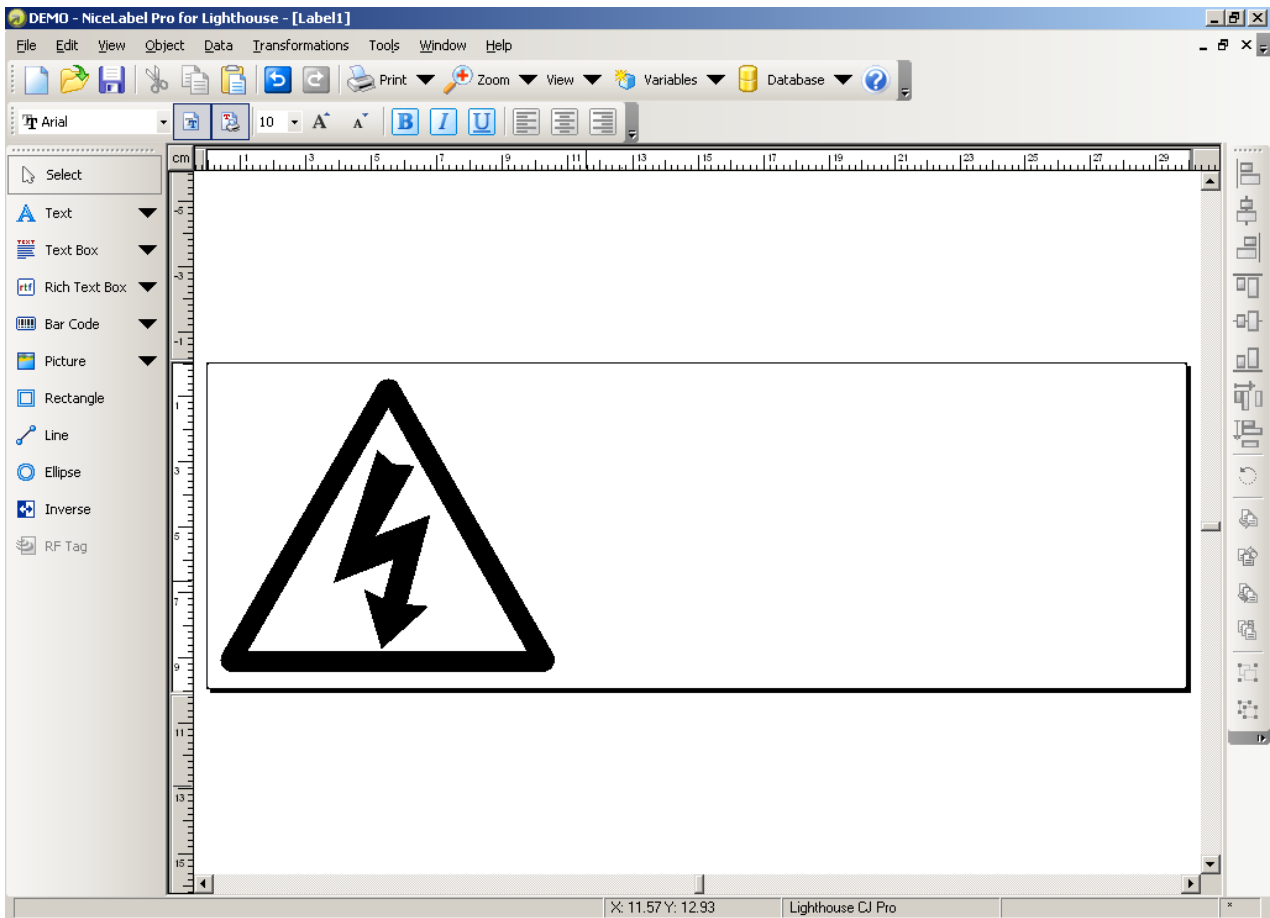
4. The Clipart Gallery is split into two sections, *Symbols* for UK symbols and *Symbols EU* for European symbols. Click on the plus symbol next to Symbols to show the separate headings.



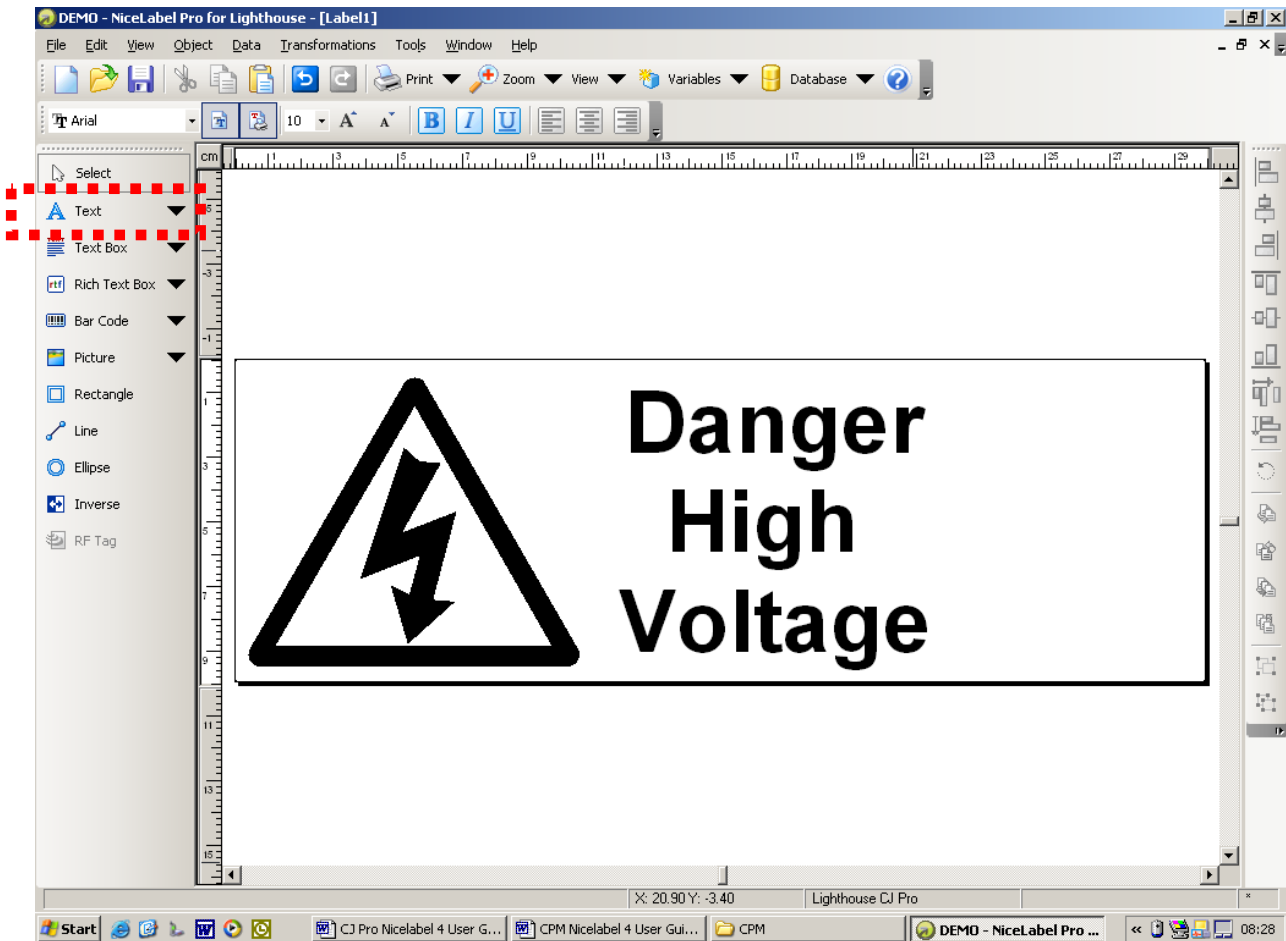
5. Select the appropriate category (*Warning*) and then double-click on the symbol you require. Note that certain categories are saved in two options, for example *Mandatory- White on Blue & Blue on White*. This allows for you to print using either White Ribbon onto Blue Vinyl or Blue Ribbon onto White Vinyl.



6. Your label should now look like this.



7. Now select the *text* button from the toolbar. The *Text Wizard* will open. Type in the text (on three lines); **Danger High Voltage** and click on Finish.

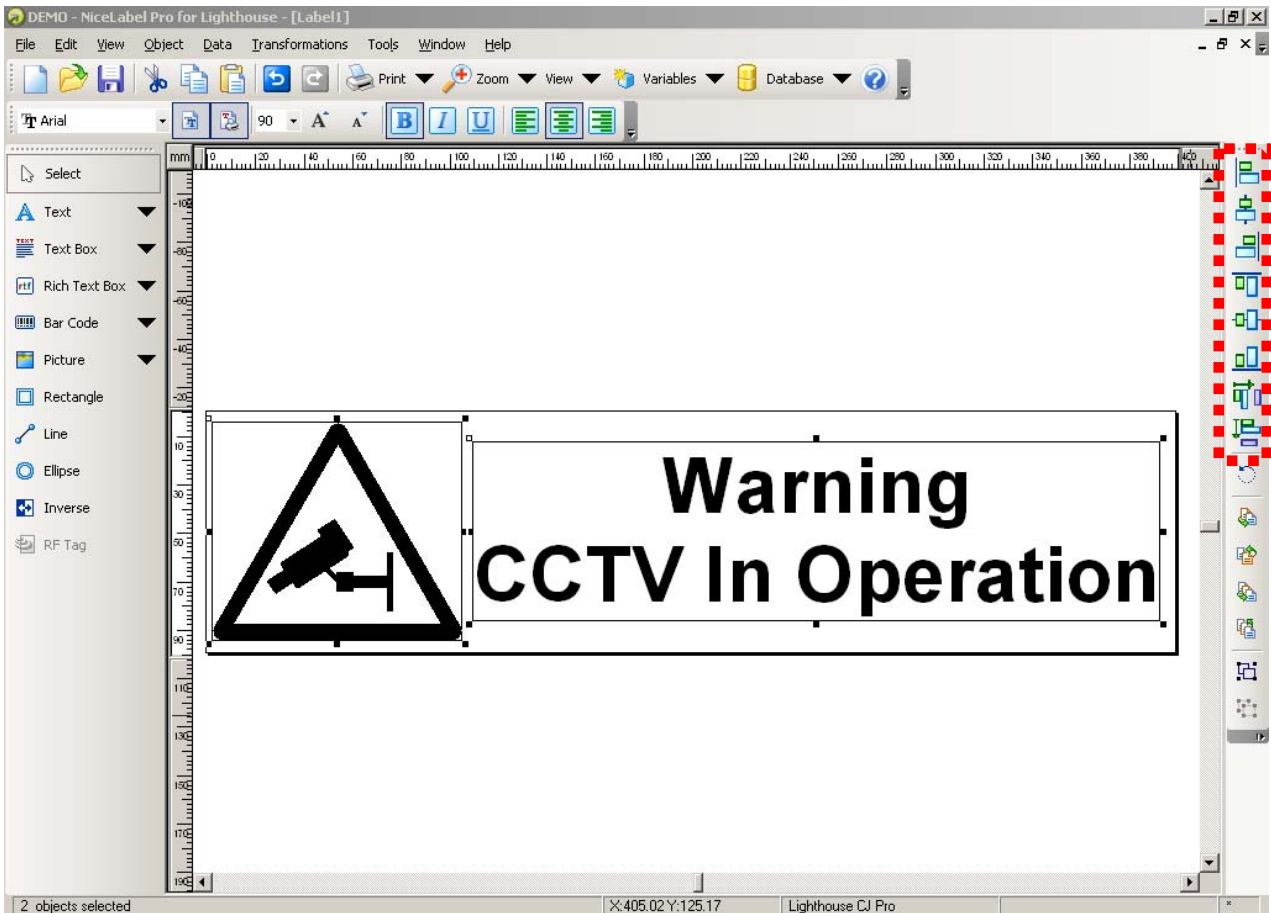


7. Then click and a box will appear around the text. This can be resized and repositioned to suit. Text can also be emboldened, centre justified etc, using the tools at the top of the screen as you would in a Word Processing package. Your label should now look like the example above.
8. You are now ready to print. Click on the print icon at the top of the screen. A dialogue box will appear which will allow you to adjust the print quantity. Click on the *Advanced* button and you can also adjust other parameters, such as print speed, darkness etc, as required. These parameters will be saved with the label design. This means when you print the label in the future, there will be no need to set them up again.
9. Click OK and your label will print!

*To remove the text wizard, go to *Options – User Interface – Settings* – and un-tick *Text Wizard**

Alignment Toolbar

To align items together use the alignment toolbar on the right hand side of the screen. Select the items first and then select the relevant alignment button.

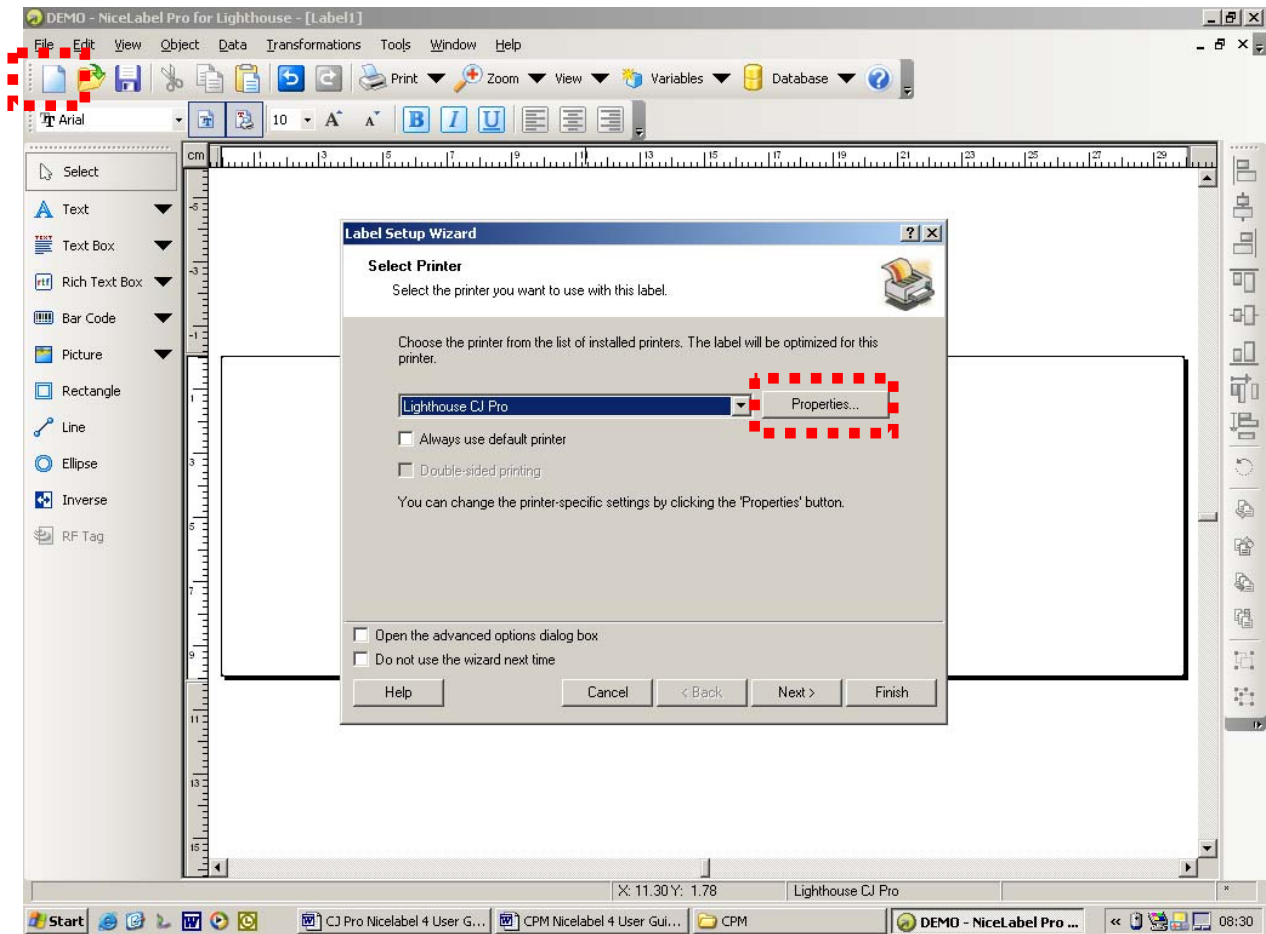


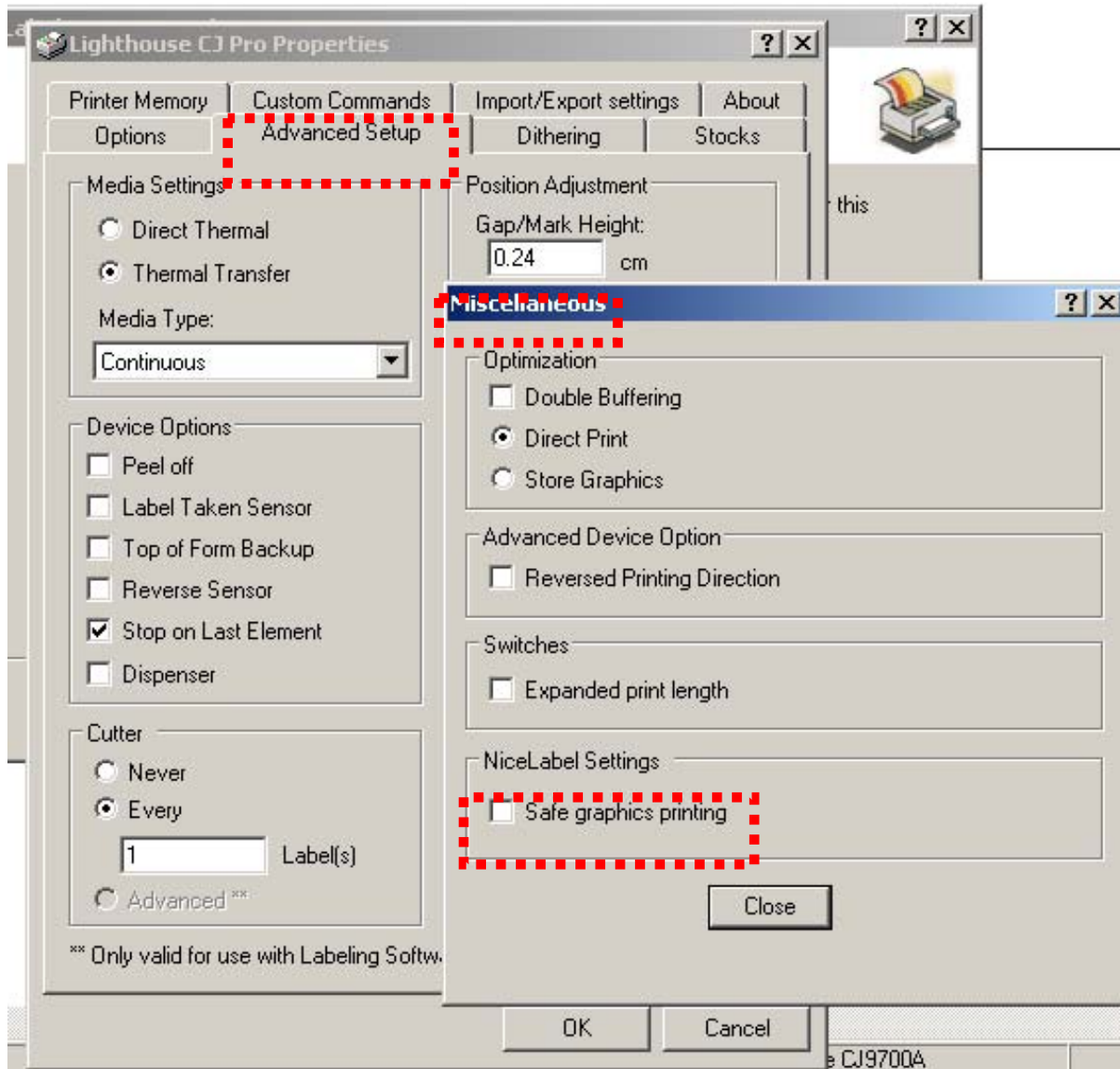
Using the Tiling Feature

Our software can be set up to print over 2 up to 5 widths of 100mm/4" vinyl. This enables you to produce signs up to 500mm/12" high!

To set up a page for tiling, follow these steps;

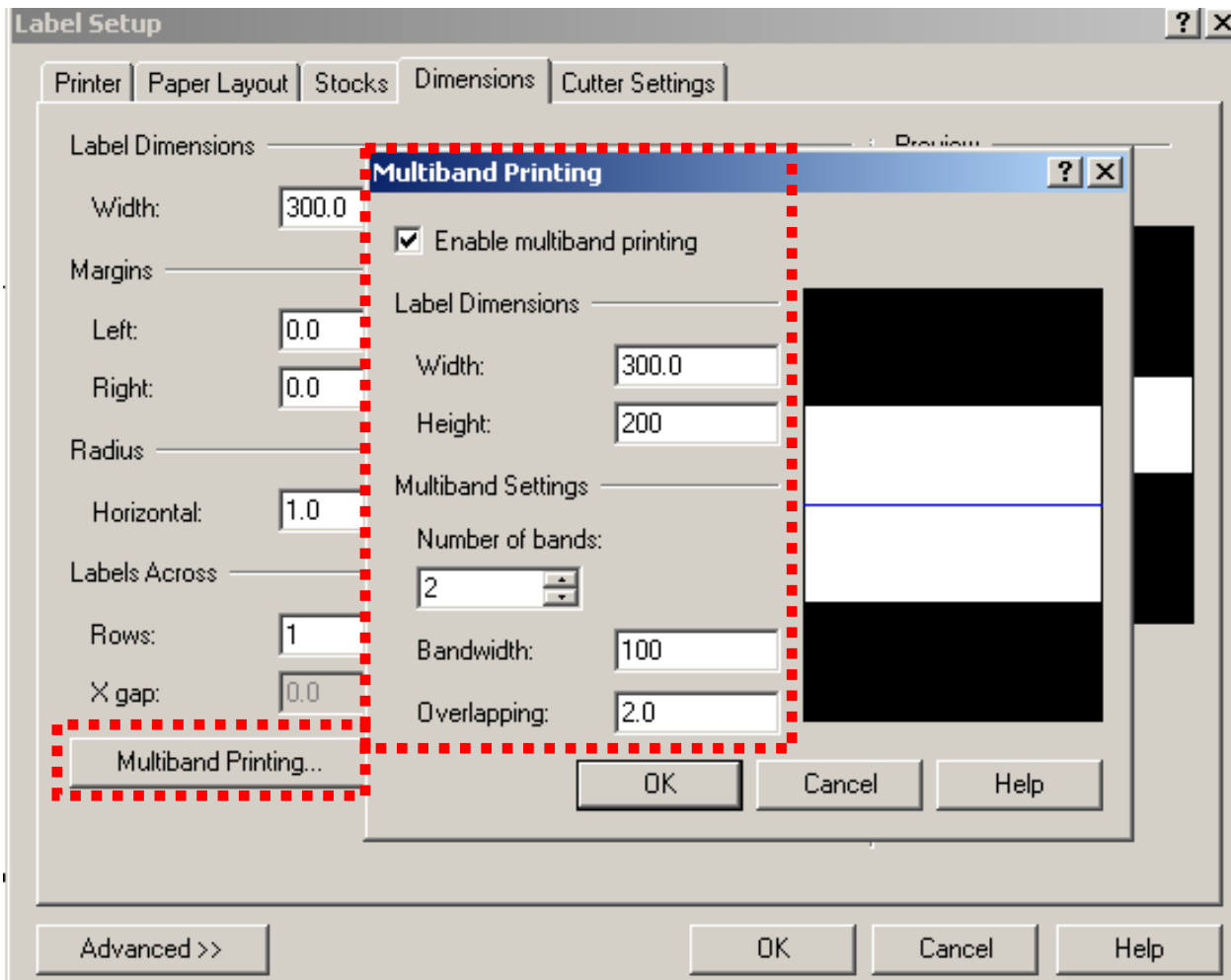
1. Open the software and click on a *new label*. Click on *Properties* on the wizard.





2. Go to the *Advanced Setup* tab then click on *Miscellaneous*.
3. Untick the '*Safe graphics printing*' option and then click *Close*, *Ok* and then *Finish*.

4. Double click on the label, tick the *Open advanced options dialog box* and click on Finish (or if this option is turned off double click on the label – See page 19). Go to the *Dimensions* tab



5. Firstly you must tick the *Multiband printing* option and then Tick *Enable multiband printing*
6. Change the number of number of bands to the number required
7. Change the label Height to the height of the label i.e. 2 bands – 200mm, 3 bands -300mm etc..
8. Change the Overlap to 2mm (0.079")
9. Lastly, make sure the band width is exactly 100mm (3.976"). Click in this box to check.



10. The screen will adjust the widths and display the bands on screen. The label will print in the multiple sections and then all you need to do is line them up!

Tips for Application

- Use our application spray and squeegees for this type of sign.
- Lay the bottom strip first.
- Remember each strip overlaps 4mm/0.4cm/0.15”
- We supply a comprehensive range of sheet materials for you to use when making these larger signs. We have everything from fluted plastics through to aluminium. Our most popular Foamex sheet is available off the shelf, in a variety of standard sizes (A4, A3, etc,) in packs of 10. Contact us for full details and pricing.

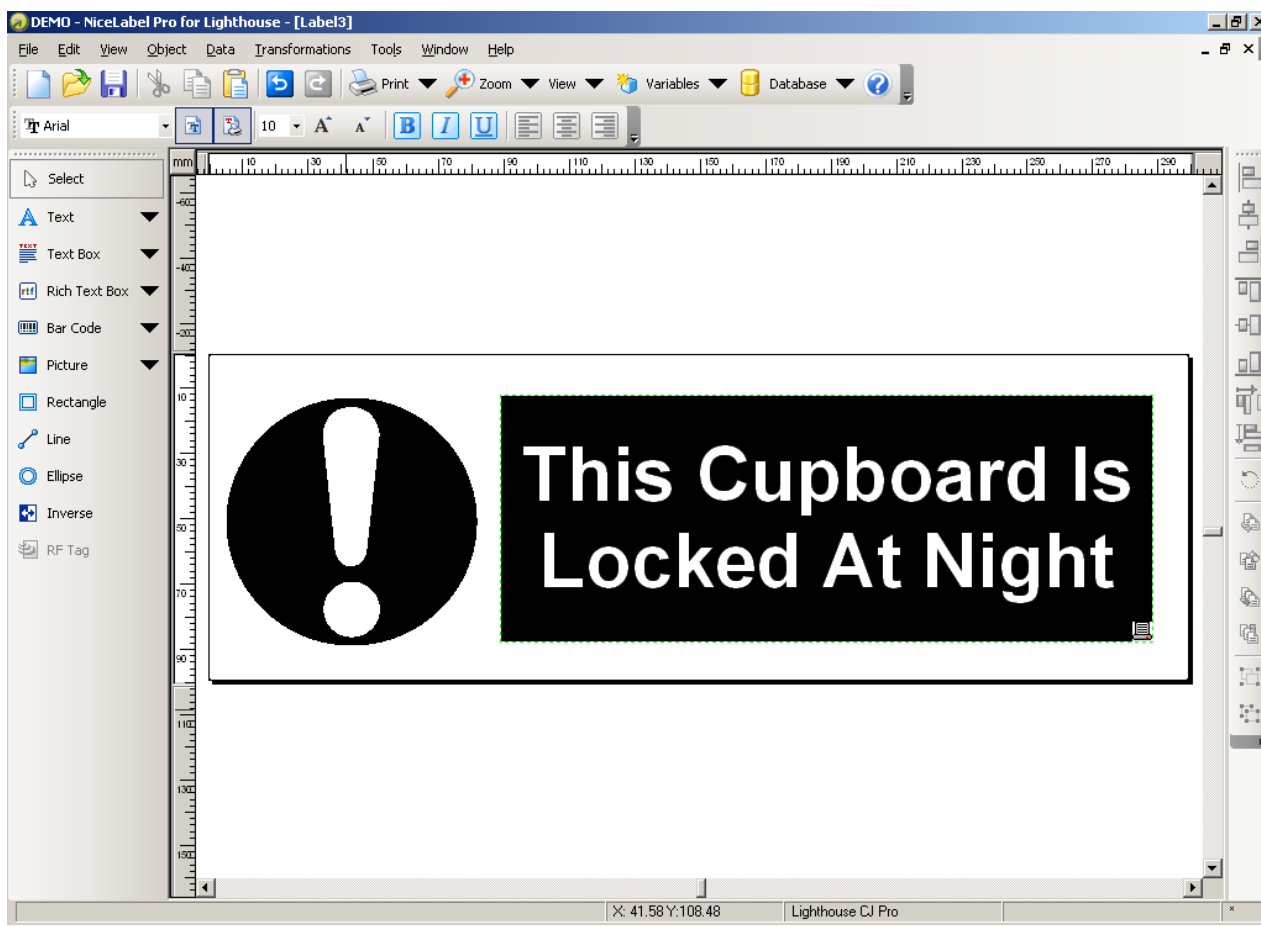
Settings Guide

The guide below indicates the compatible ribbon for each material type and the optimum '*Darkness*' and '*Speed*' settings within the Lighthouse driver. These recommendations are the same for both 'continuous' & 'die-cut' labels.

Material	Ribbon Type/Colour	Darkness Setting	Speed ("/sec)
Vinyl	Resin / Black	8-9	1.5
Vinyl	Resin / Red, Blue, Green	6-8	1.5
Vinyl	Resin / White	6-8	1 - 1.5
Paper	Wax Resin / Black	8-9	1.5

Inversing

When using inversing, the darkness setting needs to be turned down. The label below will print best with the darkness set to 6 or 7.



Help Details

There are various ways in which we can help you.

- You can call us Monday – Friday; 9am –5pm.
Tel: **01509 670990**
- You can use the free *Fax-Help Service*.
Fax **01509 670991**
- You can visit the frequently asked questions on the website:-
www.lighthouse.uk.com
- You can email questions to us;
support@lighthouse.uk.com

We can email a label design direct to your PC. You can then simply open the file in our software and print!

- If you require help with any aspect of the software, simply click 'Help' and follow the instructions.

PRODUCT DESCRIPTION

The Lighthouse CJ Pro printer is a high-performance, thermal transfer labelling system, for use for logistics, industrial and office applications.

The printer is designed with the most efficient memory management technology - *True Speed* and prints at a speed of 1 ~ 4 inches per second. It is supplied complete with a dedicated printer driver. End-users can quickly and easily, print labels with bar codes, any specific fonts and graphics, using *Lighthouse Nicelabel Software* or any editing application (e.g. CorelDraw, Word) under Windows environment.

The printer allows quick and easy supply (vinyl, polyester, paper) and ribbon loading. It is a compact, high performance on-site labelling solution.

This User's Guide will help you understand setup, operation and maintenance of the printer.

If help is required with any aspect of your CJ Pro printer, please contact Lighthouse by telephone, fax or email. All the Help details are listed on page 22.

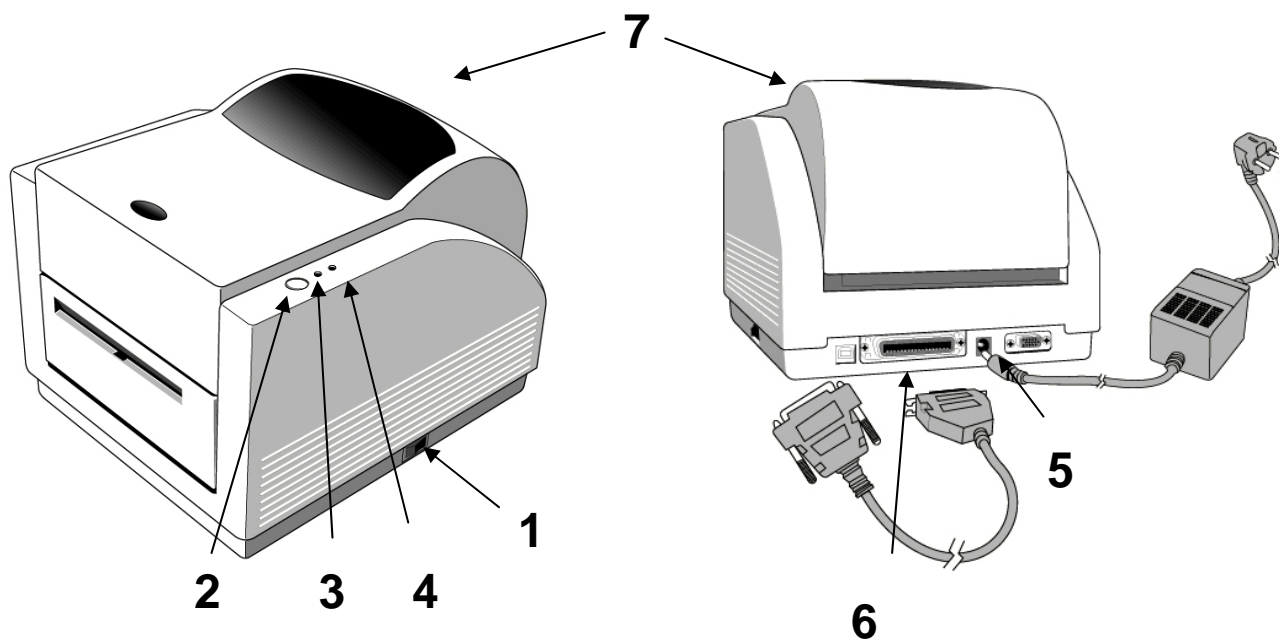


OPERATING INSTRUCTIONS

Switches, Indicators and Connections

The table below summarises the functions of the various printer switches (buttons), indicators and connections. (Diagram on next page.)

No	Device Name	Function	Usage
1	On/Off Switch	Controls Printer Power	On - Normal Operation (Power Switch) Off - Loading Media & Ribbon
2	FEED button	Advances Die-cut Labels to the first printing position of next label	Press to advance a label. Press and hold while turning on printer to print out the self-test. Press - to continue printing when READY LED is blinking. Press - to resume printing.
3	READY Light	Shows the printer status	Green - printer is ready to operate Blinking - Printer is paused. Press 'FEED' button to continue
4	POWER Light	Shows the power status & error status	Off - Printer power off Green - printer power on Blinking - Error
5	Power Jack	Connected to Power Adapter	Connected to power supply Transformer plug
6	Parallel Port	Communication	Connected to host (centronics)
7	Top Cover	Protects ribbon and media	Lift to access ribbon & media



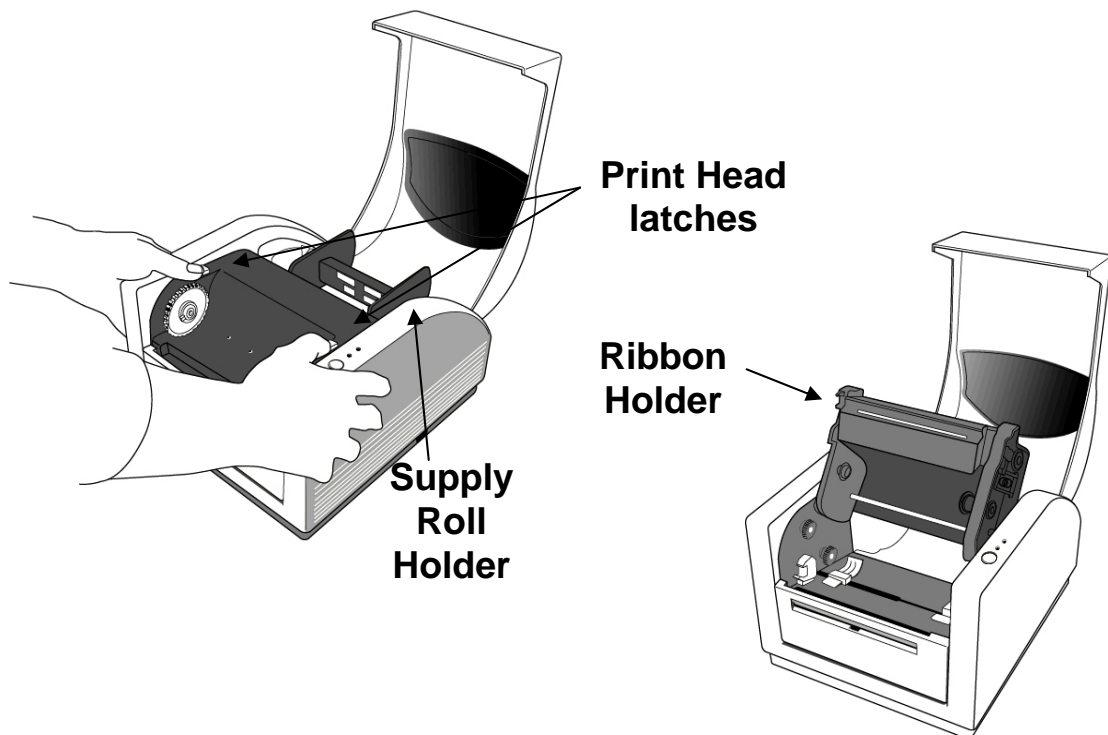
Setting up the Printer

- Ensure the printer is placed on a flat, solid surface with sufficient space above for access to the supply roll and ribbon.
- The printer must be turned off while connecting the leads. Connect the mains adapter to the power jack (5) and the printer cable to the parallel port at the back of the printer (see diagram on page 24.)

Loading the Ribbon

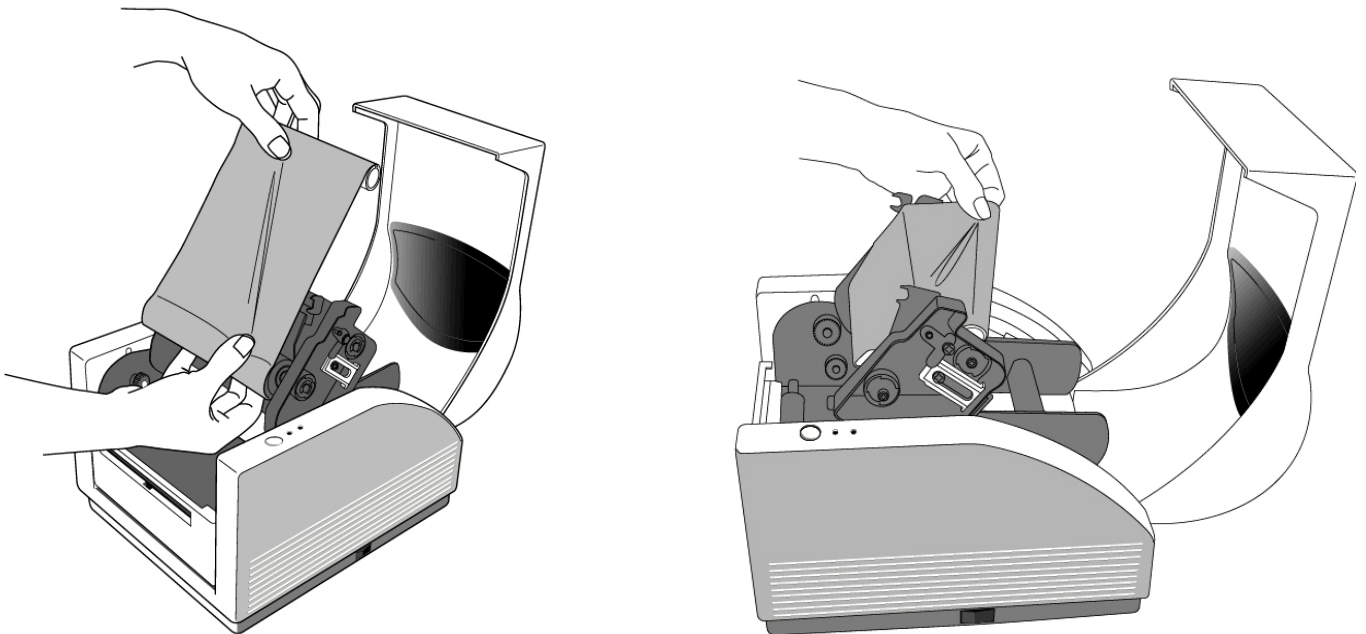
1. Open the printer lid.
2. Release the print head by sliding the two white latches (see fig.1) towards the rear of the unit.
3. Turn over the print head module to show the ribbon.

Fig. 1



4. The ribbon supplied, has a roll of ribbon and a used ribbon take-up core (see fig.2). Insert the ribbon roll into the bottom of the spring-loaded holder, left-hand side first.
5. Insert the take-up core into the upper holder inserting the right-hand side first.
6. **Please Note: - Make sure that the notches on the left side of the core are aligned with the lugs on the white spring-loaded holder.**

Fig.2

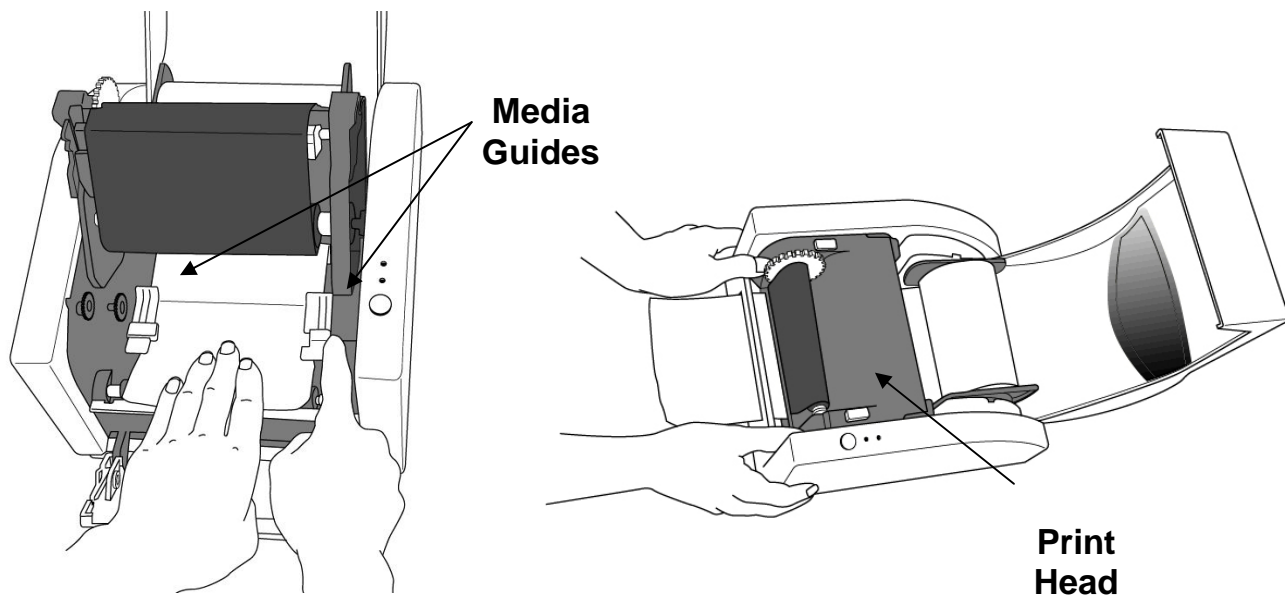


7. Wind all the lead film (this can be clear or coloured) onto the take-up core ensuring that the ribbon is taut.

Loading Supply (Continuous Vinyl or Die-Cut)

1. Lift the top cover to expose the media. Insert the supply spindle without the guides (no need to use the guides as this is the maximum width that can be fitted).
2. Place the supply roll, complete with spindle into the holder in the supply roll compartment at the back of the printer.
3. Feed the supply roll under the print head and through the two white guides in the base of the printer (see fig. 3). The supply is centrally loaded so push the two feeder guides inwards to the width of the vinyl.

Fig 3.



4. Feed the vinyl through the front of the printer and then press the print head module down firmly on both sides until it snaps into place (so that the black protruding rods on either side of the print head, click under the white latches). Close the top cover.
- 5.
6. When using Die-Cut labels, switch the printer on whilst simultaneously holding in the "**FEED**" button (see "Performing Label Sensor Calibration" below).
7. When using a Continuous Roll, simply turn the printer on.

Performing the Label Sensor Calibration

This calibration is **ONLY** needed when using the printer with **die-cut labels**.

1. Open the software to display the *Label Setup Wizard*. Click on *Properties* and go to the *Advanced Setup* tab. Click *Calibrate*.
2. Approx 8-10 inches of labels will feed out and then stop. The printer is then ready.

Notes:

Label Sensor Calibration must always be carried out if the print head is released or there is a change of supply roll. Failure to do so may result in the gap and label-empty detection being incorrect.

It does not have to be carried out each time the printer is switched off.

IMPORTANT SAFETY INSTRUCTIONS AND OTHER NOTICES

- This printer complies with the requirements in Part 15 of FCC rules for a Class B or A computing device.
- Place the printer on a flat, firm and solid surface.
- Do not place the printer near a heat source or near water.
- Do not attempt to disassemble the printer if it malfunctions.
- All rights reserved. No part of this document may be reproduced or issued to third parties in any form without the permission of Lighthouse.
- The material in this document is provided for general information and is subject to change without notice.

General Printer Specifications

Print Method	Thermal Transfer
Resolution	203 DPI (8 dots/mm)
Maximum Print Width	4.10 in. (104mm)
Maximum Print Length	45 in. (1143mm)
Maximum Print Speed	4 in. (100mm) per second
Onboard RAM	2 Mbyte
Media Type	Vinyl, Polyester and Paper materials in Continuous Roll and Die-Cut format
Label Roll Dimensions	4.25 in. (108mm) outside diameter (or 8" with optional st
Ribbon Type	Wax, Wax/Resin, Resin
Ribbon Size	OD 1.5 in. (38mm); ID 0.5 in. (12.7mm)
Interface	Centronics parallel port
Dimension	W7.3 in. x D10.9 in. x H6.0 in. (W186mm x D278mm x H153mm)
Weight	1.9 kg (4.1 lbs)
Electrical	FCC class B
CE, UL and CUL approved. Input 19 VAC or 24 VDC (min. 2.5A), 50/60 Hz	
Operating Temperature	40° ~ 140°F (5° ~ 38°C)
Storage Temperature	-40° ~ 140°F (-40° ~ 60°C)
Humidity	15 ~ 85% RH
Windows Driver	Win 95, 98, NT, NT4, W2000, XP.
Rotation	1°Increments

Trouble Shooting

When a problem with the printer occurs, the **POWER** and/or **READY** LED's will keep blinking. Printing and communication between the computer and printer will stop.

To understand what the problem is you should first look at the LED's on the front of the printer.

A. Power and Ready LEDs blink at the same time

Power LED	Ready LED
ON	ON
OFF	OFF

Possible Problems	Solutions	Remarks
Miss-detect the gap	Check the label path Check the label sensor	If you are using continuous label roll and run under Windows, you should select the continuous media.
Label stock out	Supply the label roll out	
Label stock not installed	Install the label roll	
Label jam	Recover the jam	

B. Power and Ready LEDs blink alternately

Power LED	Ready LED
ON	OFF
OFF	ON

Possible Problems	Solutions	Remarks
Ribbon out	Supply the ribbon roll	Not applicable to direct thermal type.
Ribbon jam	Recover the jam	
Ribbon sensor error	Replace the ribbon sensor	

C. Only the Power LED blinks

Power LED	Ready LED
-----------	-----------

ON	ON
OFF	ON

Possible Problems	Solutions	Remarks
Serial IO error	. Check the baud rate	Not for Centronics
Memory full	. Add the extension RAM	
Cutter failed, or jam at cutter	. Check the cutter . Recover the jam	It occurred, only when cutter is installed, or the setting of the cutter
Hardware error	Call for service	

D. Miscellaneous

1. *The computer shows "Printer Time out" error message.*

Is the communication cable connected securely to your parallel port on the PC and to the connector on the printer?

Is the printer power turned on? If the power cord is connected, the power switch at position '1' and the power LED is still not illuminated, then check the fuse in the mains plug.

2. *The data has been sent, but there is no output from the printer.*

Check the active printer driver

3. *Horizontal or Vertical streaks in the printout.*

Usually indicates a dirty or faulty print head. Clean the print head and platen roller thoroughly, using the cleaning pen supplied. If there is no improvement please contact Lighthouse. Poor print quality can also be caused if the vinyl has been handled or left out of it's grip-seal bag. Simply advance 20-40cm of vinyl and attempt print again.

Maintenance

Before performing any maintenance on the printer, please be sure to turn off the printer power.

1. *Cleaning the print head*

Turn off the printer, open the top cover and release the print head by sliding the two white latches towards the rear.

Remove the ribbon.

Using the cleaning pen provided, wipe from left to right, ensuring all visible traces of adhesive and ribbon deposits are removed.

Note:The print head should be cleaned at least every time the ribbon is replaced or if there is any deterioration in print quality, ie lines/speckles.

2. *Cleaning the paper sensor*

Using a dry foam bud, clean the small sensor glass, ensuring there are no bits of debris lodged in the top.

3. *Cleaning the Printer exterior*

Use a soft, damp cloth to wipe the grey exterior

Recovery

In order to continue your print jobs after any abnormal conditions have been recovered, simply press the panel button or switch the printer off for 10 seconds and then switch on again. Make sure that the LED is not blinking and remember to re-send your files.

Hovedkontor:
Bernt ankers vei 1
Postboks 73
2010 Strømmen
Telefon: 63 80 23 65
Telefax: 63 80 23 75
e-mail: nplien@online.no

INNREDNINGER LAGER-VERKSTED-KONTOR

NPLien a-s
Internett: www.nplien.no

Avd. Nord Norge:
Sjøgaten 25
Postboks 216
8480 Andenes
Telefon: 76 14 12 71
Telefax: 76 14 29 22
e-mail: jacobsen@nplien.no
